

SHADESAIL^{BLINDS}

Designer Lifestyle Shading

SELF SURVEY – MEASURING-UP GUIDE

A GUIDE TO MEASURING YOUR CONSERVATORY

EQUIPMENT & SAFETY NOTICE

- ✓ **You will need a tape measure that is long enough to measure each dimension in one go!**

Measuring long dimensions, in stages with a short tape measure, can lead to inaccurate measurements and impact on how well your Shade Sail Blinds will fit. The easiest way to measure-up is not to use a tape measure at all and use a handheld laser-measuring device instead. We understand not everyone has access to these devices, but they are available online for a reasonable price.

- ✓ **You may also need a second person to hold the other end of the tape measure.**

If you are attempting to measure-up using a tape measure you will need a second person to hold the other end to ensure that accurate measurements are taken. If you are going to measure-up by yourself, we strongly recommend using a laser measure.

- ✓ **Before you start to measure your conservatory, please ensure that the area is cleared of any obstructions or trip hazards.**

- ✓ **Always ensure a ladder is used and properly secured before attempting to take any measurements that are out of standing reach.**

This is particularly important for, but not limited to, any of the measurements associated with the apex.

- ✓ **Please do not undertake measurements if you are not physically fit and able to do so.**

If you are not able to take measurements yourself, we suggest seeking assistance from a friend, relative, neighbour, or local handyman. Alternatively, we offer a measuring up service, please contact us on +44 1795 848649 for more details.

Where to measure, to and from

All measurements should be taken, from and to, either the house walls or the fascia plate, also known as the ring beam. For uPVC conservatories, this is the flat panel located above the side windows at gutter level.



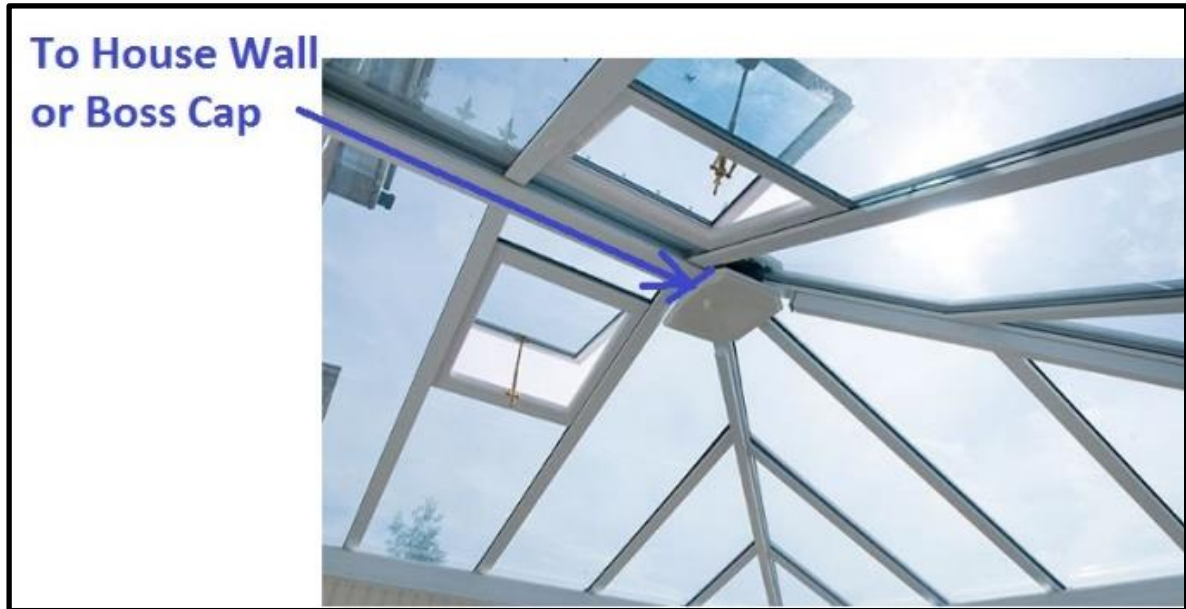
Correct Measurement Points
(to box gutter on left hand side)

If there is a box gutter present, measurements should be taken to the face of the box gutter and **not** the house wall.



Incorrect Measurement Points
(to house wall including box gutter on left hand side)

When measuring the Apex, do not include the 'Boss Cap' which is the moulded plastic piece at the end of the apex beam. Measure from the point shown on the Boss Cap to the house wall or second Boss Cap.



Correct Apex Measurement

Measuring the Height of the roof space (as shown in the diagrams below) can be achieved in two ways:

- 1) The Easy Way – By measuring vertically from the floor to the top of the fascia plate and vertically from the floor to the underside of the apex beam. We will then work out the rest from there.
- 2) The Slightly Less Easy Way – By measuring the vertical, not diagonal, distance from the top of the fascia plate to the underside of the apex beam.

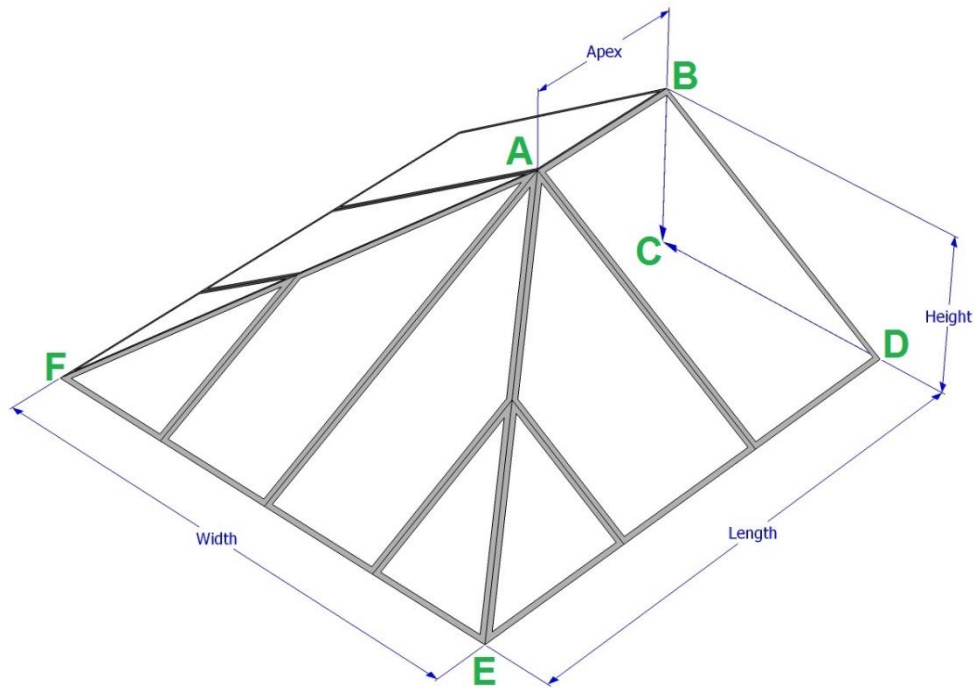


Option 1

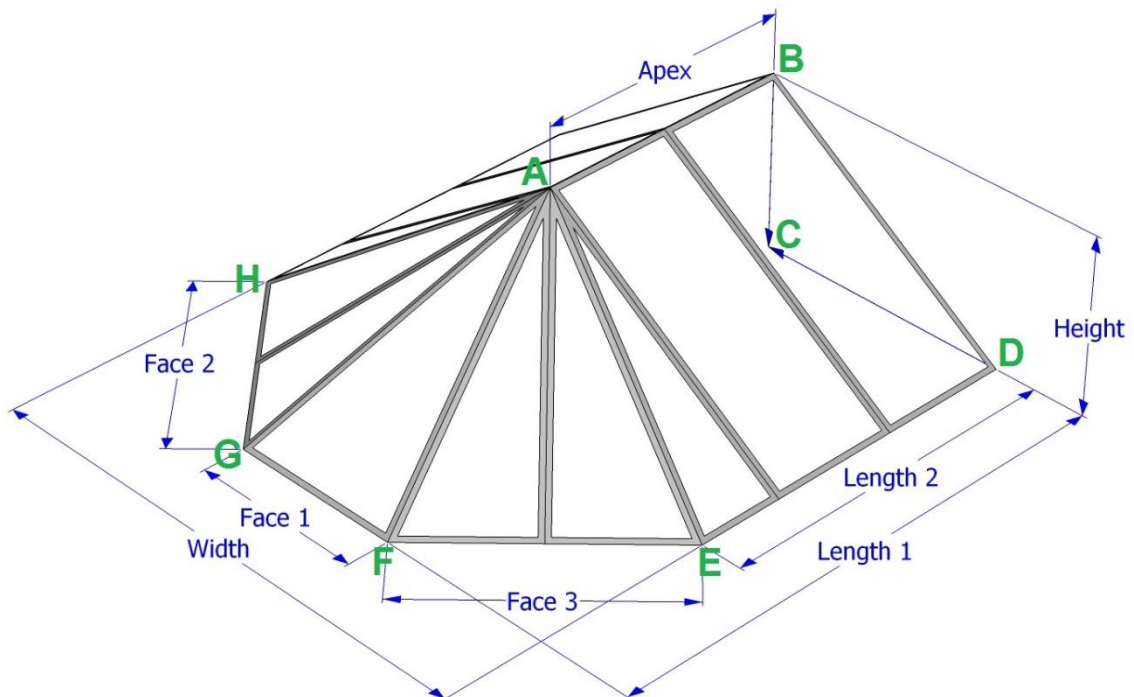


Option 2

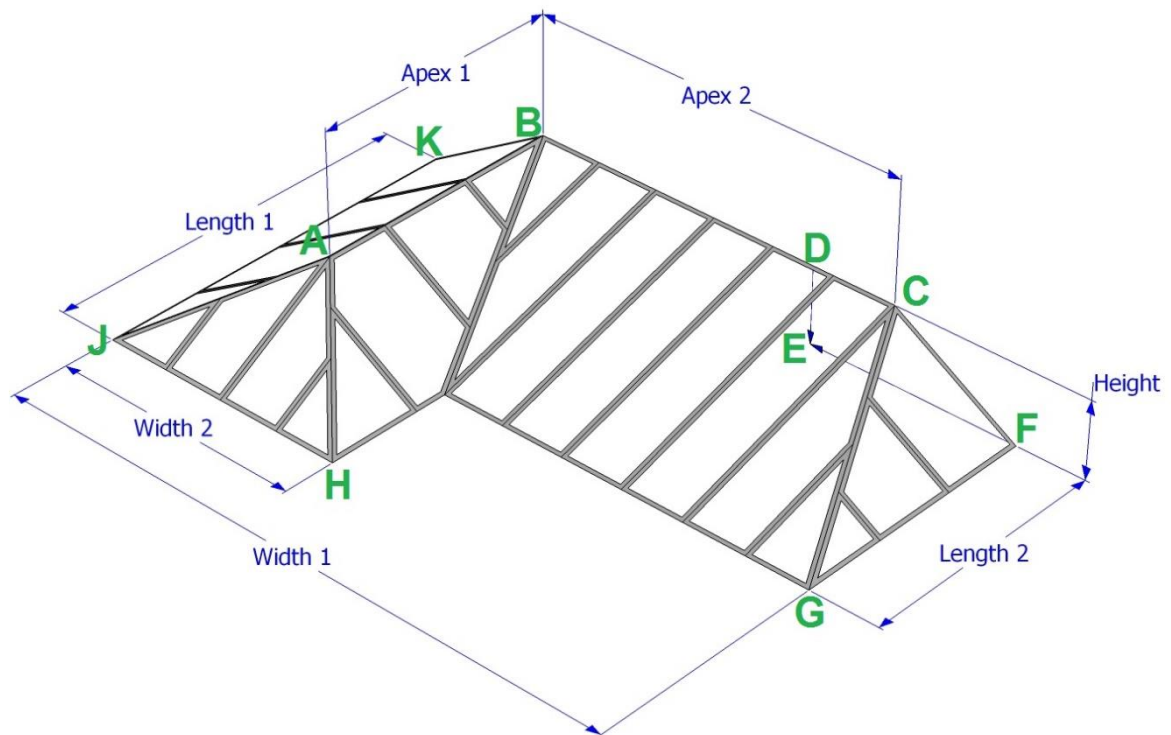
What to measure



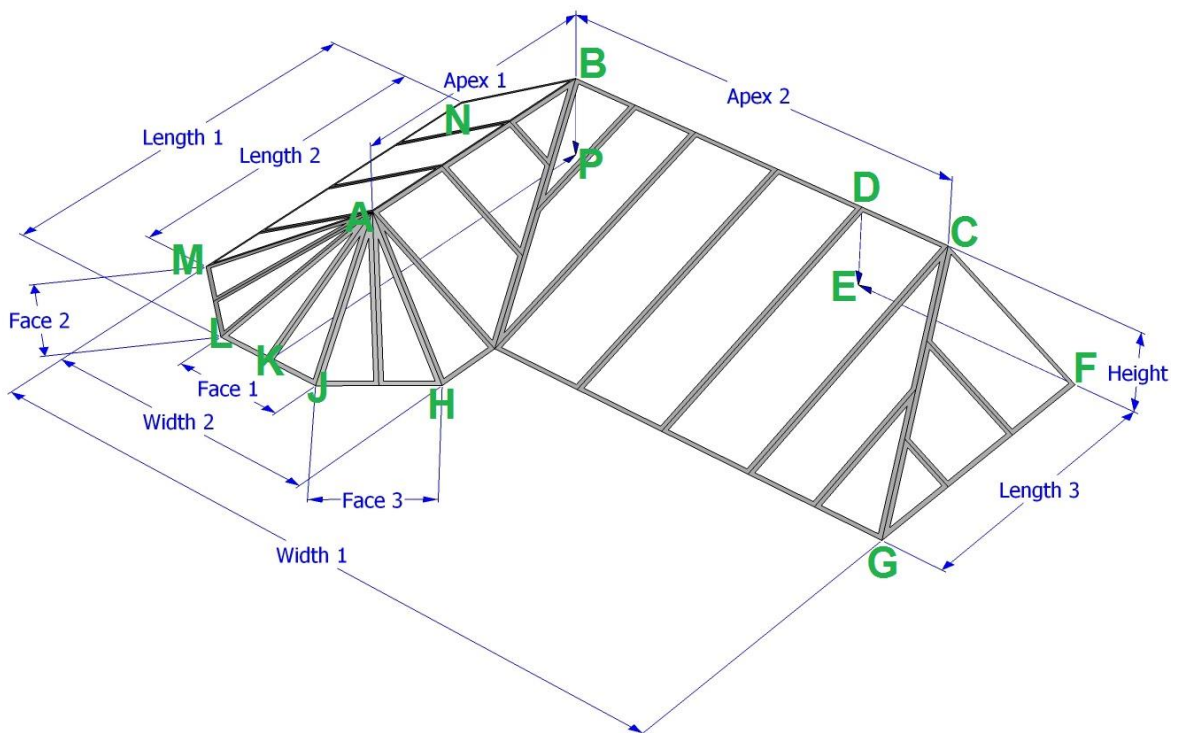
Hip Bay



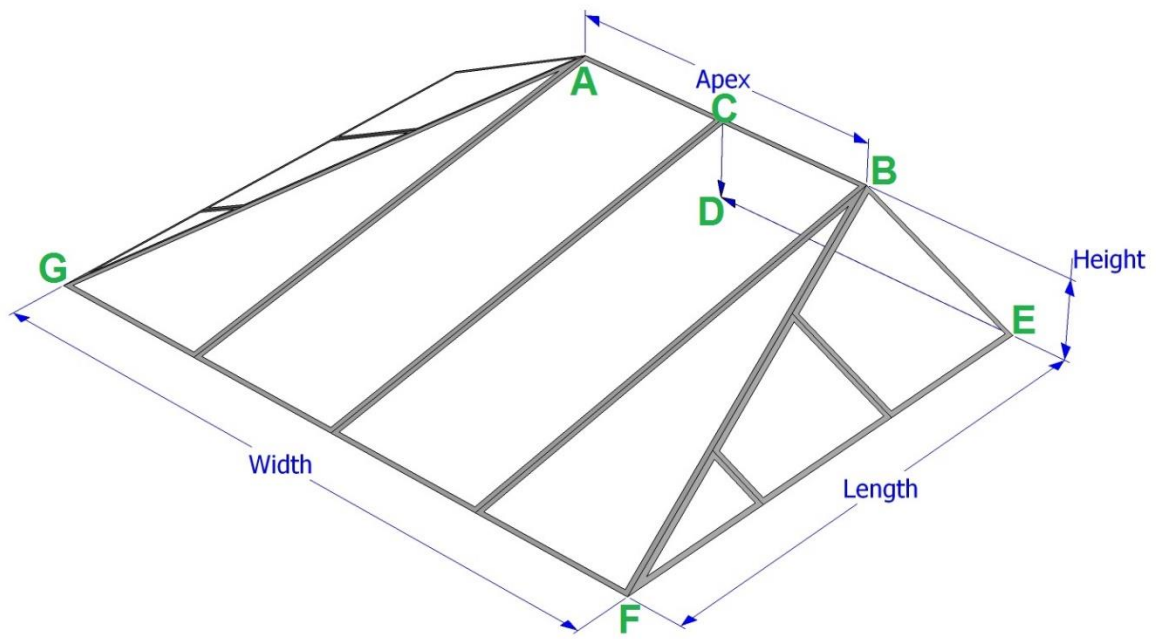
Victorian Bay



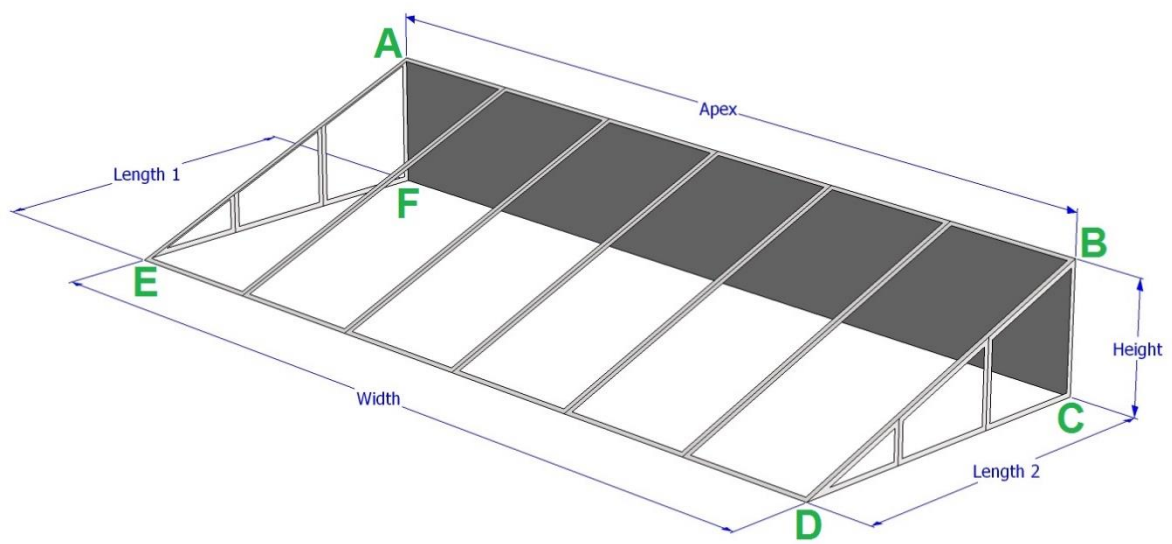
'P' Hip – Left (or Right) Hand



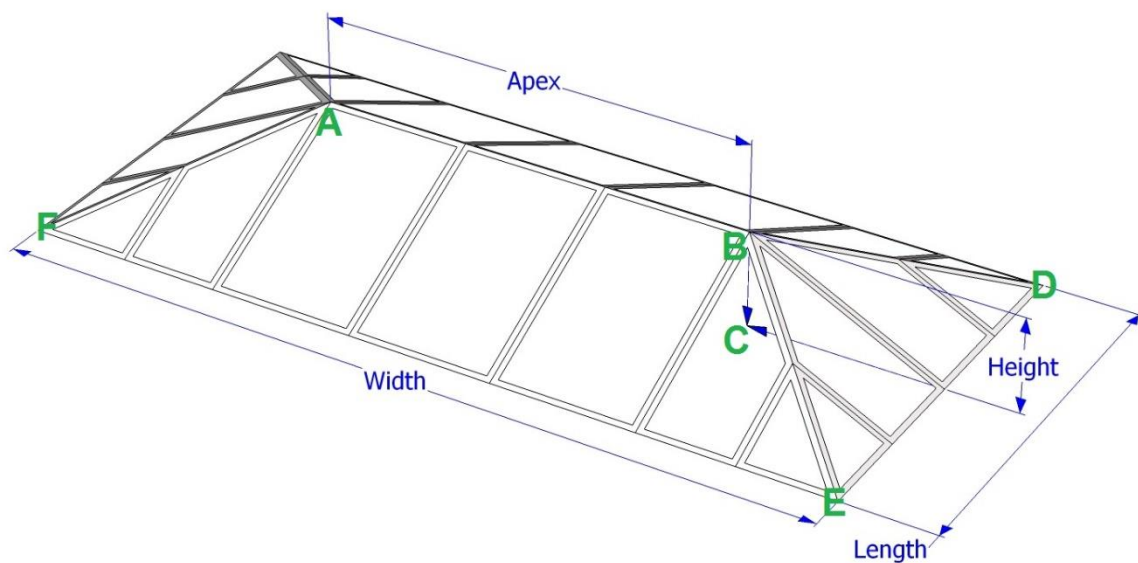
'P' Victorian– Left (or Right) Hand



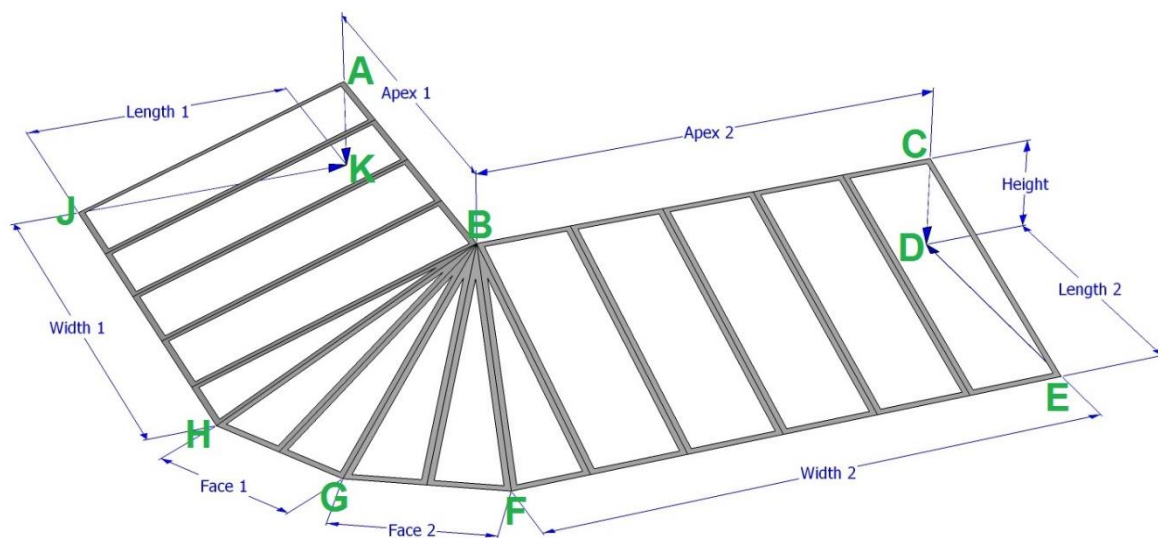
Lean-To (Hipped)



Lean-To



Double Hip / Orangery / Lantern Roof



'L' Victorian – Left (or Right) Hand

Individual Measuring-Up guides are available for each of the above conservatory types and include a complete list of all measurements required. There is also a checklist for possible Shade Sail obstructions and requested images. These guides can be found on our website here <https://shadesailblinds.com/measuring-up-guide/>

Please Note: If you have a 'P' or 'L' shaped conservatory please do not forget to include whether it is Left Hand (as shown above) or Right Hand.

If you have a 'Double Hip' shaped conservatory, please do not forget to state whether the Apex is centrally located or not.

If you don't know which model to choose or your conservatory is not covered by one of these common types, don't worry! Just get in contact with us by phone or email and we can help get things sorted.

Contact Us

E-mail: hello@shadesailblinds.com

Telephone: +44 1249 848649